

# EarthLink Complete™ Hosted Voice CommPortal Assistant Installation Guide

## COMMPORTAL ASSISTANT (PREMIUM SEATS ONLY)

The CommPortal Assistant is a thin software client that runs on your PC and offers a convenient and fully-integrated route into your account.

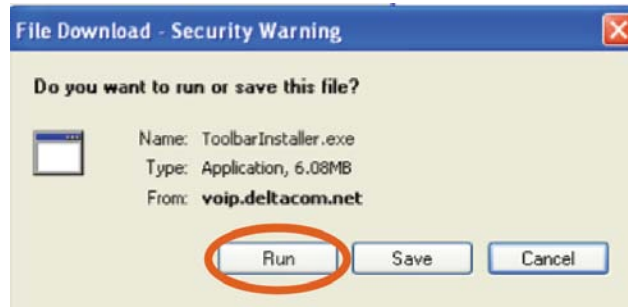
- Go to the Apps tab in CommPortal



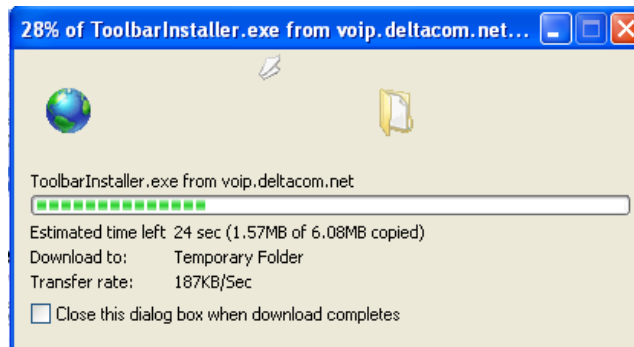
- Select the Assistant Application then click on the hyperlink:



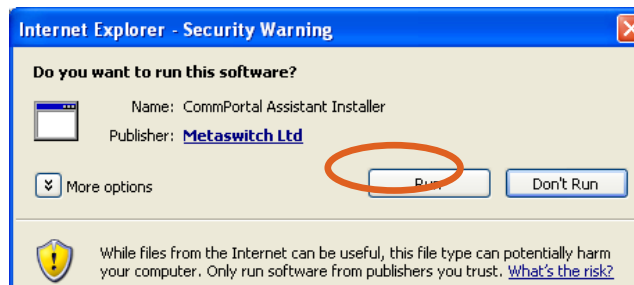
- You will be prompted to install the application select Run:



- A toolbar will appear with the progress of the install:




- You will be prompted to run the software Installer, select Run:



- You will be asked to accept the terms of the License Agreement:



- Once it has been installed, you will have to configure it to your profile.
- Right click on the desktop icon for the CommPortal Assistant 
  - Select the option labeled "Configure"
  - In the General Settings tab, enter the CommPortal Credentials and Proxy settings as shown below. The Options settings can be set based on your personal preferences.

